

Be prepared with the fast,
effective defence against flooding

FloodSax®
Flood Damage Limitation
www.floodsaxdirect.com



FloodSax® - the world-beating
alternative to sandbags
Easy to store - ready to use
Tough, lightweight and small until energised



STOP WATER IN ITS TRACKS

Accidental Water Damage

Accidents can happen at any time, whether it be appliance leaks or overflows, bath/shower overflows or general leaks from pipes in your home or business.

You can act immediately by placing unenergised FloodSax® on the site of the leak or overflow.

Storm Damage

Storms can strike at any time, so it is important to be prepared for an immediate response.

Storms can cause severe damage to both businesses and homes, with the threat of rising waters, strong winds and lightning.

FloodSax® are great to have on hand for roof leaks caused by storm damage, and for protecting your property from water ingress.

Urban Flash Flooding

Flooding caused by short bursts of heavy rain, over a short period of time.

Drains simply cannot cope with the volume of rain during severe wet weather events and as a consequence streets may flood.

FloodSax® can be deployed by covering entrances to stop water from entering your premises.

River and Lake Flooding

Generally occurring in low lying areas, river and lake flooding happens when a river or stream exceeds its holding capacity. This excess water can spread for miles, depending on the flood severity.

To protect against this type of flooding FloodSax® can be deployed by covering entrances to stop water from entering your premises.



LAUNDRY



LEAKS



STORMS

FloodSax®, the innovative self-inflating flood defence system is set to revolutionise the way we control damage due to flooding.

20 FloodSax® can be stored in a box and can be deployed in minutes to protect your business or home from flood water. FloodSax® are used as an alternative to traditional sandbags or Flood Bags, and allow everyone to prepare for flooding.

A box of 20 Floodsax is the equivalent of a pallet of 20 sandbags. Therefore much easier to store as they are far smaller and lighter.

The semi-porous inner liner contains hundreds of absorbent crystals which absorb water to 90% capacity in just 3 minutes. Once the water is in there, it stays there and the bags act just like sandbags to keep floods at bay. They are designed so they mould into doorways to keep floodwater out.

- Floodsax® are similar in weight and texture to a pillow whilst dry, but are as tough and heavy as sandbags within minutes.
- Easy storage means they are ready for action anytime, any place, anywhere.
- Floodsax are exceptionally tough and can stop a powerful torrent of water in its tracks.
- Designed so the frail and elderly can deploy them in minutes, they are endorsed by the National Disabled Fire Association, which supports disabled people working in the fire service and the wider communities in which they serve.

Floodsax are designed to control flood damage and can buy you sufficient time to move your loved ones and valuable possessions to safety.



FLASH FLOODING



TOILET BACK FLOW



RIVERINE FLOOD

**FloodSax® are ideal for any emergency
- not just for floods. Stops water in its tracks!**



LAUNDRY



LEAKS



STORMS



FLASH FLOODING



TOILET BACK FLOW



RIVERINE FLOOD

Facility Managers/Building owners

- Storms/flood mitigation
- Broken pipes/storm water overflow
- Faulty sprinkler system leaks
- Kitchen/bathroom spills and leaks
- Persistent plumbing leaks
- Contain cascading water flow from multi storey and high rise buildings
- Minimise exposure to slips for customers and staff
- Assist as a risk mitigation component of your safety management system

Shopping Centres and Retail

- Sanitised/clean option for mitigating water damage
- Contain and localise water damage to keep trading

IT/Communications Companies

- Immediate protection for server rooms/equipment against water damage

Hospitals/Aged Care Facilities

Schools/Universities/Childcare

- Localise and contain water damage to minimise disruption

Plumbers & Maintenance

- Lightweight option for temporary water management
- Compact to store and carry in vehicles

Water Companies

- Water/sewage bursts and spills mitigation:
- Reduce response times for water main breaks, bursts and leaks
- Provide an instant containment wall for water/sewage flow

Mining

- Contain underground water leaks, divert and manage water flow

Building Construction

- Lightweight and portable option for sandbags and water management

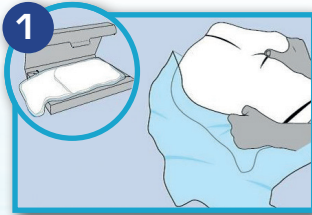
Public Transport Systems

- Mitigate disruptions to timetables caused by storms, floods and accidental water damage
- Provide an instant containment wall for water flow at stations and along transport infrastructure

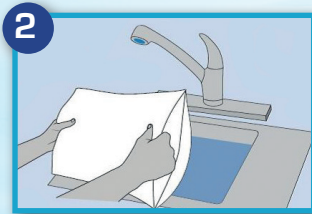
Government Agencies:

- Manage water damage for public assets and housing

How to energise your FloodSax®

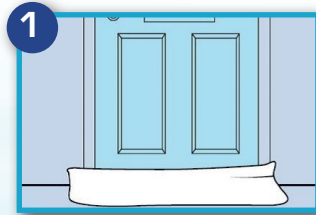


Place 1 x FloodSax® into a container. Add approx 20 litres of water & leave to soak for 3 minutes

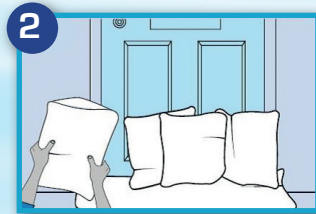


Use the expanded FloodSax®

How to build your wall of FloodSax®



After energising, place one long FloodSax® against the base of the door.



And then build a wall on top by vertically overlapping the other energised FloodSax®.

Advantages

FloodSax®

Sandbags

Easy to store



Can be vacuum-packed



Thousands can be quickly transported in a van



Lightweight before they are used



Can be stored for a long time



Can be expanded at scene of a flood



Can be stored in small depots



Environmentally friendly



Frequently asked questions & answers

1. Can it be reused?	No
2. If it starts to dry and then comes into contact with a liquid again will it work?	If it starts to dry and goes down to 50% and then comes into contact again with a liquid it will re energise but only to 75% of its original size.
3. Is it Biodegradable?	Yes
4. How do you get rid of it?	If it's not contaminated it can be buried in landfill
5. What do you do if it's contaminated?	It has to be disposed of in line with your countries legislation.
6. How long does it take to biodegrade?	It depends on the depth of burial and the ground temperatures
7. Will it absorb chemicals?	Yes, it will absorb most chemicals but as there of thousands of different chemicals you must do specific tests on the chemicals you want to absorb
8. Will it absorb oil?	It will absorb some oils of a lower viscosity but you must do specific tests on the oils you want to absorb
9. How long do they stay activated?	Up to 3 months as long as they are in contact with a liquid.
10. What's the highest you recommend to build a wall?	Depending on the force of the water but no more than a meter high and they must be at least two meters wide.
11. How long are they guaranteed for?	5 years as long as you keep them vacuum packed and check them each year.
12. How many come in a pack?	Five
13. How many come in a case?	FloodSax commercial = 20 FloodSax Homeowner = 30 FloodSax 15 = 30
14. How many cases on a pallet?	20
15. How many fit in a container?	Depending on packaging but a 40 foot will hold circa 900 cases.
16. What types do you sell?	Commercial Home owner FloodSax 15
17. Why are they white?	To show contamination when the water/liquid recedes
18. Can we have our name or logo printed on them?	Yes you can but it adds cost a they have to be printed in a specific way
19. What temperature range will they work in?	-10 to plus 50
20. Where are they made?	They are currently made in the UK / Europe

How many FloodSax® do I need?

Each 20 Litre Floodsax® is approximately 30cm (12 inches) wide.

Each layer of Floodsax® will keep approximately 20 cm (8 inches) of water out.

Add up all of the following (guide only) -

Single External Doors

1 x Door Pack or 5 x 20 Litre. 3 on the outside and 2 on the inside.

Double External Doors e.g. patio

2 x Door Pack or 10 x 20 Litre

Air Bricks (per brick) - 2 x 20 Litre.

Please remember old houses have lower air bricks, newer houses have higher and most houses have a minimum of 2 air bricks.

Downstairs Toilets

1 x 15 Litre (included in door pack)

or 1 x 20 Litre (included in DIY pack)

Garage doors - Single

Typically 10 x 20 Litre (3 metre width)

Garage doors - Double

Typically 20 x 20 litre (6 metre width)

For open spaces, i.e. a flood barrier to divert water running past your property as shown on the video - you also need to think about how high the water might rise.

Things to think about

- Plan ahead - don't leave it until it's too late - remember prevention is better than cure
- Water can come in not only through doors and windows
- Air bricks on the outside of the property - do you know where they are?
- Downstairs toilets - a Floodsax® jammed in the toilet will prevent sewage being backed up in to your home
- It is recommended that you make provision to have enough Floodsax to put inside behind doors to soak up any seepage

Door Pack Singles

SKU DOOR01

4 x 15 litre sax
1 x sausage

Sax Dimensions:
L 450 +/- 5mm,
W 350 +/- 5mm uninflated

Sausage Dimensions:
L 900 +/- 5mm,
W 190 +/- 5mm



The Door Pack kit is perfect for protecting standard doorways from water intrusion. The kit comes with one 900 x 190 mm 'sausage' to lay and form at the base of the door and four 450 x 350 mm bags to build a wall on top of the sausage.

Multi-Pack Option

Homeowner Case = 5 x Door Pack Singles
SKU 1CASE-HO

DIY Pack Large

SKU DIY-L

5 x 20 litre sax

Dimensions:
L 490 +/- 5mm,
W 400 +/- 5mm uninflated



Perfect for use by government agencies, universities and businesses, the DIY FloodSax® are the largest we offer at 490 x 400 mm. They are designed to cover more ground in less time. FloodSax® are the best choice when faced with rapidly rising flood waters.

Multi-Pack Option

20 Litre Case = 4 x DIY Pack Large
SKU 1CASE-20

Floodsax Direct Ltd.

Manor House, Barnstone, Nottinghamshire NG13 9JP

Tel: 01949 869 110

Mob: 07809 273 535

Email: charlotte@floodsaxdirect.com

www.floodsaxdirect.com

ASK FOR
A QUOTE